

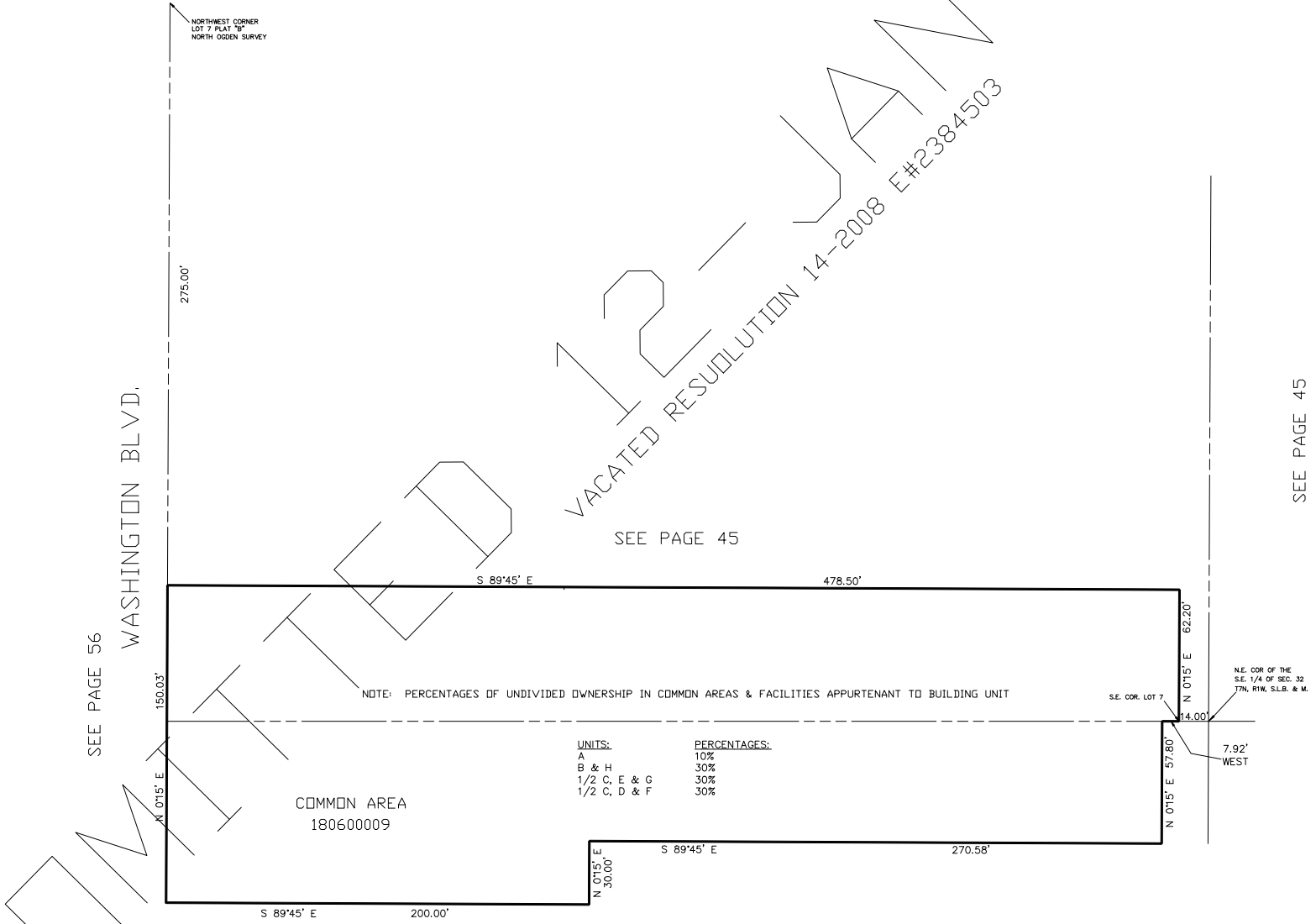
PART OF THE S.E. 1/4 OF SECTION 32, T.7N., R.1W., S.L.B. & M.
PART OF LOT 7, PLAT "B", NORTH OGDEN SURVEY
NORTH OGDEN PROFESSIONAL BUILDING CONDOMINIUM

TAXING UNIT: 10

IN NORTH OGDEN CITY
SCALE 1" = 40'

SURVEY PLAT: BOOK 18 OF DEDICATION PLAT, PAGES 57 & 58

UNIT NO.	SERIAL NO.	NAME OF OWNERS	UNIT NO.	SERIAL NO.	NAME OF OWNERS
A	180600001	LAST THREE LTD=1/6 ETAL	E	180600005	LAST THREE LTD=1/6 ETAL
B	180600002	LAST THREE LTD=1/6 ETAL	F	180600006	LAST THREE LTD=1/6 ETAL
C	180600003	LAST THREE LTD=1/6 ETAL	G	180600007	LAST THREE LTD=1/6 ETAL
D	180600004	LAST THREE LTD=1/6 ETAL	H	180600008	LAST THREE LTD=1/6 ETAL



SEE BOOK 17, PAGE 69